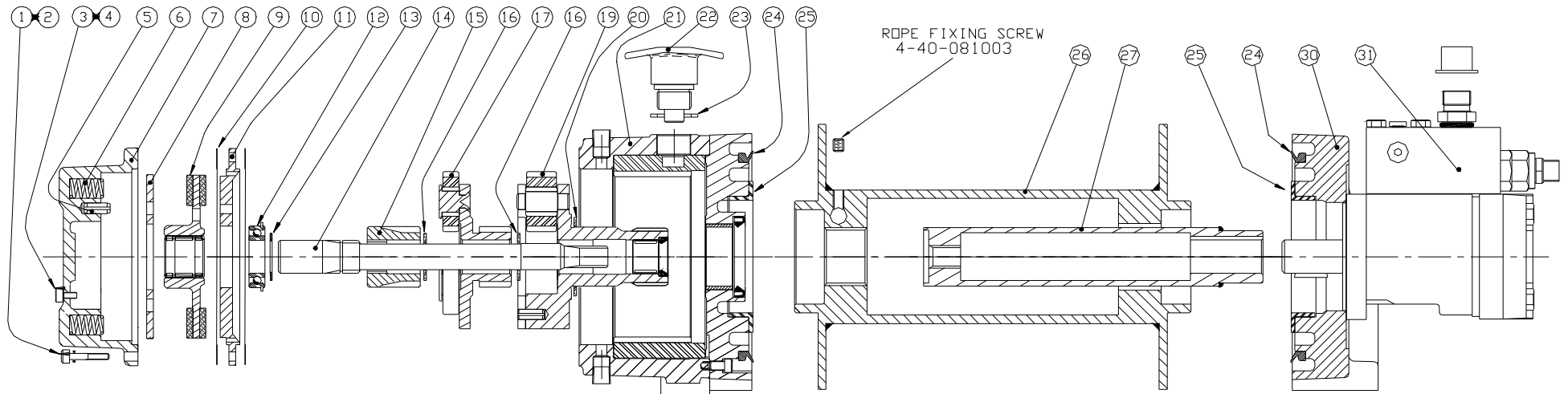


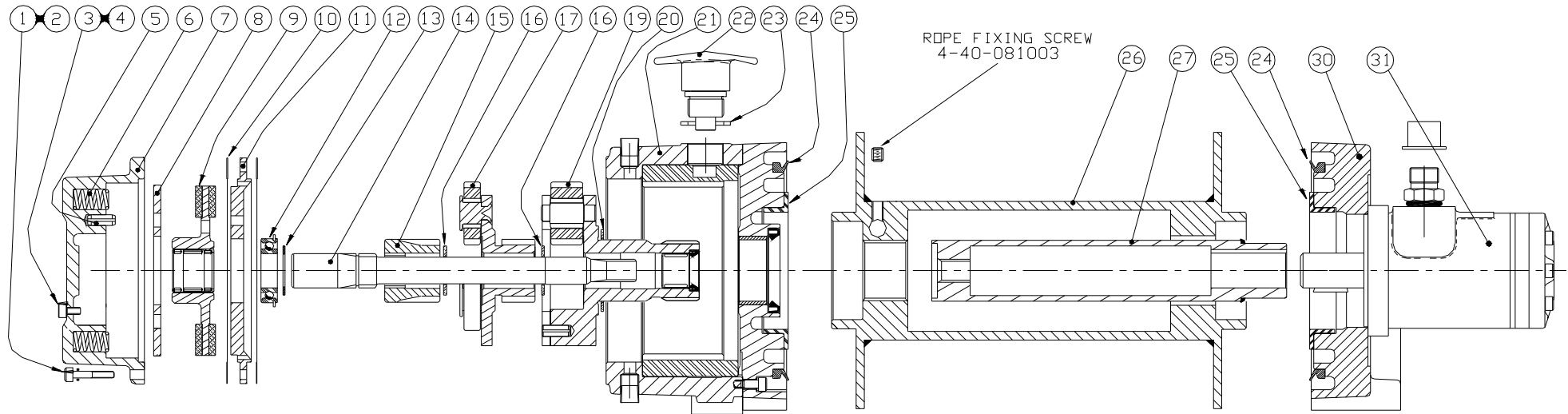
H8P / H10P SERIES WINCHES, GENERAL ASSEMBLY, WITH LOAD CONTROL VALVE



Item:	Description:	Part No:	Qty:	Item:	Description:	Part No:	Qty:
1	Cap Hd Screw.	4-36-0603022	6	19	2 nd Stage Carrier Assy.	10011	1
2	Spring Washer.	4-51-0623	6	20	Thrust Washer.	10051	1
3	Cap Hd Screw.	4-36-0601022	2	21	Gear Housing Assy.	50-90547	1
4	Screw Seal.	4-23-063	2	22	F / Spool Assy, Manual.	10076	1
5	Roll Pin.	4-56-802003	3	22	F / Spool Assy, Air.	5603	"
6	Spring.	4-31-1403030403	6	22	No F / Spool Plug.	10280	"
7	Brake Housing.	50-90622-01	1	23	Washer.	10295	1
7	Brake Housing, (5052Gg, only).	50-25160	"	24	Face Seal.	4-22-140161123	2
8	Pressure Plate.	10002	1	25	Drum Bearing.	10049	1
9	Friction Plate Assy.	10028	1	26	Drum Assy, 190mm.	50-90010	1
10	Gasket.	10063	2	26	Drum Assy, 253mm.	50-90011	"
11	Bearing Plate & Ball Bearing.	50-95074	1	26	Drum Assy, 253, DIN.	50-90003	"
12	Ball Bearing.		1	27	Coupling Tube, 190mm.	50-90014	1
13	Snap Ring.	4-26-2517123	1	27	Coupling Tube, 253mm.	50-90015	"
14	Drive Shaft.	50-50056	1	30	Support Housing.	50-90424	1
15	Sun Gear.	50-54013	1	31	Motor / Block Assembly.	50-90425	1
16	Thrust Washer.	10006	2	n/s	Tie Bar, 190mm.	50-52006	2
17	1 st Stage Carrier Assy.	10061	1	n/s	Tie Bar, 253mm.	50-52007	"

NOTE: Item 11, Bearing Plate: 50-95074, is supplied fitted with ball Bearing: 4-13-025047123.

H8P / H10P SERIES WINCHES, GENERAL ASSEMBLY, WITHOUT LOAD CONTROL VALVE



Item:	Description:	Part No:	Qty:	Item:	Description:	Part No:	Qty:
1	Cap Hd Screw	4-36-0603022	6	20	Thrust Washer	10051	1
2	Spring Washer	4-51-0623	6	21	Gear Housing Assy	50-90547	1
3	Cap Hd Screw	4-36-0601022	2	22	F / Spool Assy, Manual	10076	1
4	Screw Seal	4-23-063	2	22	F / Spool Assy, Air	5603	"
5	Roll Pin	4-56-802003	3	22	No F / Spool Plug	10280	"
6	Spring	4-31-1403030403	6	23	Washer	10295	1
7	Brake Housing	50-90622-01	1	24	Face Seal	4-22-140161123	2
8	Pressure Plate	10002	1	25	Drum Bearing	10049	1
9	Friction Plate Assy	10028	1	26	Drum Assy, 190mm	50-90010	1
10	Gasket	10063	2	26	Drum Assy, 253mm	50-90011	"
11	Bearing Plate, fitted with Bearing.	50-95074	1	26	Drum Assy, 253, DIM	50-90003	"
12	Ball Bearing		1	27	Coupling Tube, 190mm	50-90014	1
13	Snap Ring	4-26-2517123	1	27	Coupling Tube, 253mm	50-90015	"
14	Drive Shaft	50-50056	1	30	Support Housing	50-90424	1
15	Sun Gear	50-54013	1	31	Motor Assembly	50-90433	1
16	Thrust Washer	10006	2	n/s	Tie Bar, 190mm	50-52006	2
17	1st Stage Carrier Assy	10061	1	n/s	Tie Bar, 253mm	50-52007	"
19	2nd Stage Carrier Assy	10011	1				

NOTE: Item 11, Bearing Plate, 50-95074 is supplied fitted with ball Bearing: 4-13-025047123.